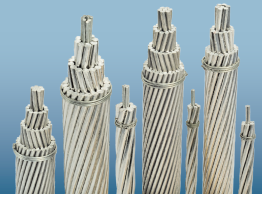




ALL ALUMINUM CONDUCTOR STEEL REINFORCED (ACSR) - EN 50182 : 2001 - TYPE A1/ST1A

Code Name	Sectional Area	Stranding		Wire diameter		Diameter of Complete Conductor	Conductor Weight	Rated Strength	DC Resistance @ 20°C	Current Capacity			
		No. of Wires		AL	Steel					AL	Steel	@ 75°C	@ 85°C
		(mm ²)	(No.)	(No.)	(mm)					(mm)	(mm)	(Kg/km)	KN
34-AL1/6-ST1A	40.10	6	1	2.70	2.70	8.10	139	12.4	0.8342	121	144		
48-AL1/6-ST1A	56.30	6	1	3.20	3.20	9.60	195	16.8	0.5939	148	178		
70-AL1/11-ST1A	81.30	26	7	1.85	1.44	11.70	282	26.3	0.4132	197	238		
94-AL1/22-ST1A	116.20	30	7	2.00	2.00	14.00	433	43.2	0.3067	236	287		
94-AL1/15-ST1A	109.70	26	7	2.15	1.67	13.60	381	34.9	0.3060	235	286		
97-AL1/34-ST1A	131.10	36	7	1.85	2.50	14.90	537	57.1	0.2990	241	295		
122-AL1/20-ST1A	141.40	26	7	2.44	1.90	15.50	491	44.5	0.2376	273	334		
119-AL1/42-ST1A	160.40	36	7	2.05	2.75	16.50	654	68.8	0.2435	272	334		
128-AL1/30-ST1A	157.80	30	7	2.33	2.33	16.30	587	56.4	0.2260	282	346		
149-AL1/24-ST1A	173.10	26	7	2.70	2.10	17.10	601	53.7	0.1940	307	377		
150-AL1/53-ST1 A	202.40	36	7	2.30	3.10	18.50	827	84.3	0.1934	311	384		
172-AL1/40-ST1A	211.80	30	7	2.70	2.70	18.90	788	74.9	0.1683	334	413		
184-AL1/30-ST1A	213.60	26	7	3.00	2.33	19.00	741	65.3	0.1571	346	428		
209-AL1/34-ST1 A	243.20	26	7	3.20	2.49	20.30	844	73.4	0.1381	373	463		
212-AL1/49-ST1A	261.50	30	7	3.00	3.00	21.00	973	92.5	0.1363	377	470		
243-AL1/39-ST1A	282.50	26	7	3.45	2.68	21.80	980	85.1	0.1188	406	507		
238-AL1/82-ST1A	320.20	36	19	2.90	2.35	23.40	1305	134.4	0.1218	406	508		
257-AL1/60-ST1A	316.50	30	7	3.30	3.30	23.10	1178	108.2	0.1126	421	527		

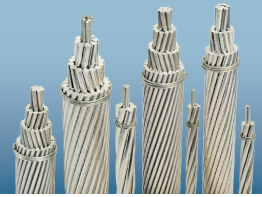




ALL ALUMINUM CONDUCTOR STEEL REINFORCED (ACSR) - EN 50182 : 2001 - TYPE A1/ST1A

Code Name	Sectional Area	Stranding		Wire diameter		Diameter of Complete Conductor	Conductor Weight	Rated Strength	DC Resistance @ 20°C	Current Capacity	
		No. of Wires		AL	Steel					AL	Steel
	(mm ²)	(No.)	(No.)	(mm)	(mm)	(mm)	(Kg/km)	KN	(Ω/Km)	(Ampere)	(Ampere)
304-AL1/49-ST1A	353.7	26	7	3.86	3.00	24.40	1227	105.1	0.0949	462	580
341-AL1/109-ST1A	450.0	78	19	2.36	2.70	27.70	1797	183.7	0.0848	497	629
382-AL1/49-ST1A	431.2	54	7	3.00	3.00	27.00	1443	121.3	0.0758	516	653
449-AL1 /39-S T1 A	488.2	48	7	3.45	2.68	28.70	1549	119.1	0.0644	564	716
562-AL1/49-ST1A	611.2	48	7	3.86	3.00	32.20	1939.5	146.3	0.0515	637	817
679-AL1/86-ST1 A	764.5	54	19	4.00	2.40	36.00	2550	206.6	0.0426	708	916
1288-AL1/183-ST1A	1471.1	100	19	4.05	3.50	49.90	5002	407.2	0.0225	991	1331
54-AL1/9-ST1A	62.4	6	1	3.37	3.37	10.11	216	18.6	0.5355	157	189
85-AL1 /14-ST1 A	99.3	6	1	4.25	4.25	12.75	344	29.2	0.3367	207	251
106-AL1/25-ST1 A	130.6	30	7	2.12	2.12	14.84	486	48.0	0.2729	253	309
152-AL1/25-ST1 A	176.9	26	7	2.73	2.12	17.28	614	54.8	0.1898	310	382
305-AL1/39-ST1A	344.1	54	7	2.68	2.68	24.12	1151	96.8	0.0949	455	571
565-AL1/72-ST1A	636.6	54	19	3.65	2.19	32.85	2123	174.1	0.0512	641	823
42-AL1/25-ST1A	67.1	12	7	2.12	2.12	10.60	310	36.5	0.6817	141	170
89-AL1/52-ST1A	141.6	12	7	3.08	3.08	15.40	655	72.1	0.3230	218	267
93-AL1/39-ST1A	132.4	10	7	3.44	2.68	14.92	565	60.4	0.3102	221	271

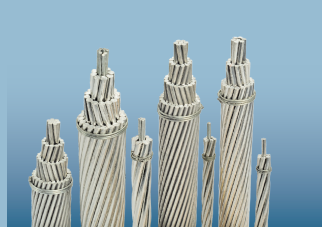




ALL ALUMINUM CONDUCTOR STEEL REINFORCED (ACSR) - EN 50182 : 2001 - TYPE A1/ST1A

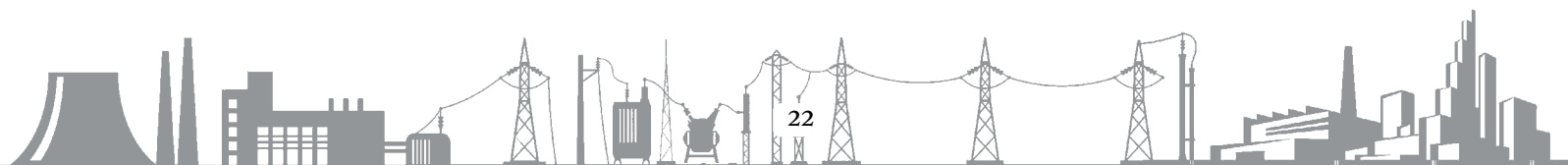
Code Name	Sectional Area (mm ²)	Stranding		Wire diameter		Diameter of Complete Conductor (mm)	Conductor Weight (Kg/km)	Rated Strength KN	DC Resistance @ 20°C (Ω/Km)	Current Capacity	
		No. of Wires		AL (mm)	Steel (mm)					@ 75°C (Ampere)	@ 85°C (Ampere)
		AL (No.)	Steel (No.)								
		(mm ²)	(No.)	(No.)	(mm)					(mm)	(mm)
148-AL1/67-ST1A	215.3	42	19	2.12	2.12	19.08	937	105.2	0.1955	307	380
28-AL1/9-ST1A	37.7	9	3	2.00	2.00	8.30	152	16.3	1.0187	110	131
38-AL1/22-ST1A	59.7	12	7	2.00	2.00	10.00	276	32.7	0.7660	131	158
48-AL1/28-ST1A	75.5	12	7	2.25	2.25	11.30	349	41.2	0.6052	151	182
59-AL1/34-ST1A	93.3	12	7	2.50	2.50	12.50	431	49.5	0.4902	171	207
119-AL1/28-ST1A	147.1	30	7	2.25	2.25	15.80	547	54.0	0.2423	271	332
147-AL1/34-ST1A	181.6	30	7	2.50	2.50	17.50	676	64.9	0.1963	306	377
185-AL1/43-ST1A	227.8	30	7	2.80	2.80	19.60	848	80.5	0.1565	349	432
234-AL1/55-ST1A	288.3	30	7	3.15	3.15	22.10	1073	98.6	0.1236	399	498
15-AL1/3-ST1A	17.8	6	1	1.80	1.80	5.40	62	5.8	1.8769	74	88
24-AL 1/4-ST1A	27.8	6	1	2.25	2.25	6.75	96	9.0	1.2012	97	116
44-AL 1/32-ST1 A	75.6	14	7	2.00	2.40	11.20	369	44.2	0.6574	145	175
51-AL 1/30-ST1A	81.0	12	7	2.33	2.33	11.70	375	43.0	0.5644	157	190
97-AL 1/56-ST1A	152.8	12	7	3.20	3.20	16.00	707	77.9	0.2992	228	280
106-AL1/76-ST1A	181.2	14	19	3.10	2.25	17.50	885	105.8	0.2742	242	298
122-AL 1/71-ST1A	193.4	12	7	3.60	3.60	18.00	895	97.9	0.2364	262	323

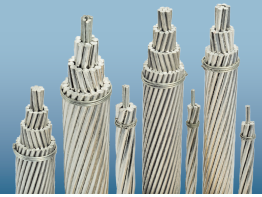




ALL ALUMINUM CONDUCTOR STEEL REINFORCED (ACSR) - EN 50182 : 2001- TYPE A1/ST1A

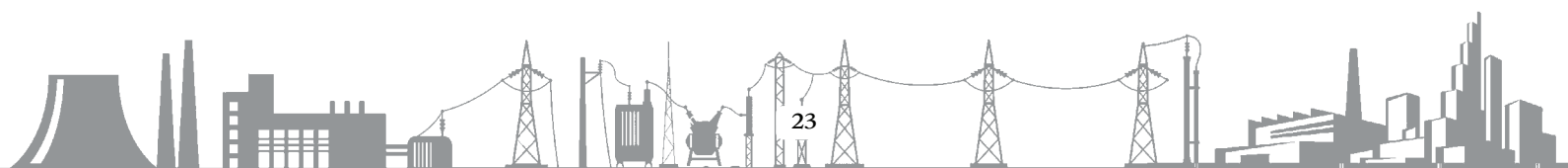
Code Name	Sectional Area	Stranding		Wire diameter		Diameter of Complete Conductor	Conductor Weight	Rated Strength	DC Resistance @ 20°C	Current Capacity	
		No. of Wires		AL	Steel					AL	Steel
	(mm ²)	AL	Steel	(mm)	(mm)	(mm)	(Kg/km)	KN	(Ω/Km)	(Ampere)	(Ampere)
		(No.)	(No.)								
231-AL 1/30-ST1A	260.8	24	7	3.50	2.33	21.00	871	72.1	0.1250	394	490
264-AL 1/34-ST1A	297.7	24	7	3.74	2.49	22.40	994	81.0	0.1095	425	531
339-AL 1/30-ST1 A	369.1	48	7	3.00	2.33	25.00	1171	91.7	0.0852	482	606
386-AL 1/34-ST1A	420.1	48	7	3.20	2.49	26.70	1334	102.6	0.0749	518	655
434-AL 1/56-ST1A	490.6	54	7	3.20	3.20	28.80	1641	133.6	0.0666	555	705
490-AL 1/64-ST1A	553.8	54	7	3.40	3.40	30.60	1853	150.8	0.0590	593	757
494-AI 1/34-ST1A	528.4	45	7	3.74	2.49	29.90	1633	118.0	0.0584	594	757
511-AL 1/45-ST1A	555.8	48	7	3.68	2.87	30.70	1765	133.3	0.0566	605	773
550-AL 1/71-ST1A	620.9	54	7	3.60	3.60	32.40	2077	166.3	0.0526	632	810
571-AL 1/39-ST1A	610.6	45	7	4.02	2.68	32.20	1887	136.4	0.0506	643	824
653-AL 1/45-ST1A	698.8	45	7	4.30	2.87	34.40	2160	156.2	0.0442	691	891
1046-AL 1/45-ST1A	1090.9	72	7	4.30	2.87	43.00	3248	218.9	0.0277	887	1170
27-AL 1/9-ST1A	36.0	8	1	2.06	3.44	7.56	146	15.0	1.0776	105	125
38-AL 1/13-ST1A	51.3	8	1	2.46	4.11	9.03	208	21.3	0.7557	130	155
40-AL 1/7-ST1A	46.2	6	1	2.90	2.90	8.70	160	14.3	0.7231	132	158
52-AL 1/30-ST1A	82.1	12	7	2.36	2.32	11.70	376	42.9	0.5501	159	193
53-AL 1/19-ST1A	71.8	8	1	2.91	4.86	10.70	291	29.5	0.5400	158	191





ALL ALUMINUM CONDUCTOR STEEL REINFORCED (ACSR) - EN 50182 : 2001- TYPE A1/ST1A

Code Name	Sectional Area	Stranding		Wire diameter		Diameter of Complete Conductor	Conductor Weight	Rated Strength	DC Resistance @ 20°C	Current Capacity			
		No. of Wires		AL	Steel					AL	Steel	@ 75°C	@ 85°C
		(mm ²)	(No.)	(No.)	(mm)					(mm)	(mm)	(Kg/km)	KN
	56-AL 1/9-ST1A	65.10	6	1	3.44	3.44	10.30	225	19.4	0.5139	161	194	
79-AL 1/46-ST1A	125.50	12	7	2.90	2.90	14.50	581	66.2	0.3643	203	248		
80-AL 1/13-ST1A	92.90	6	1	4.11	4.11	12.30	321	27.3	0.3600	199	241		
111-AL 1/19-ST1A	129.90	6	1	4.86	4.86	14.60	449	38.2	0.2575	242	296		
112-AL 1/65-ST1A	176.60	12	7	3.44	3.44	17.20	817	90.0	0.2589	248	305		
112-AL 1/18-ST1A	130.00	26	7	2.34	1.82	14.80	451	40.9	0.2583	259	317		
151-AL 1/25-ST1A	175.80	26	7	2.72	2.12	17.20	611	54.6	0.1912	309	380		
151-AL 1/35-ST1A	186.00	30	7	2.53	2.53	17.70	692	65.8	0.1916	310	382		
191-AL 1/31-ST1A	222.30	26	7	3.06	2.38	19.40	772	67.1	0.1510	354	439		
191-AL 1/45-ST1A	236.00	30	7	2.85	2.85	20.00	878	83.4	0.1510	356	442		
239-AL 1/39-ST1A	277.70	26	7	3.42	2.66	21.70	964	83.8	0.1209	403	502		
238-AL 1/56-ST1A	293.90	30	7	3.18	3.18	22.30	1093	100.5	0.1213	404	504		
293-AL 1/48-ST1 A	341.20	26	7	3.79	2.95	24.00	1184	101.5	0.0985	452	567		
294-AL 1/69-ST1A	362.10	30	7	3.53	3.53	24.70	1347	122.3	0.0984	454	571		
381-AL 1/62-ST1A	443.20	26	7	4.32	3.36	27.40	1538	129.3	0.0758	524	664		
381-AL 1/87-ST1A	467.40	30	19	4.02	2.41	28.10	1734	159.7	0.0760	525	666		
402-AL 1/52-ST1A	454.50	54	7	3.08	3.08	27.70	1521	123.8	0.0719	532	673		

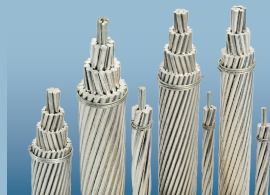




ALL ALUMINUM CONDUCTOR STEEL REINFORCED (ACSR) - EN 50182 : 2001- TYPE A1/ST1A

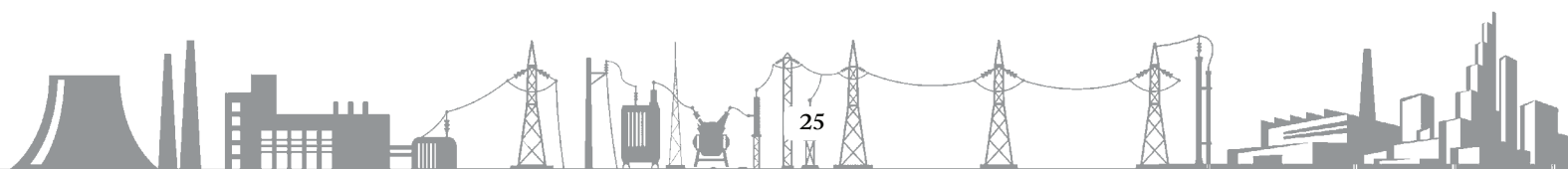
Code Name	Sectional Area	Stranding		Wire diameter		Diameter of Complete Conductor	Conductor Weight	Rated Strength	DC Resistance @ 20°C	Current Capacity	
		No. of Wires		AL	Steel					AL	Steel
	(mm ²)	(No.)	(No.)	(mm)	(mm)	(mm)	(Kg/km)	KN	(Ω/Km)	(Ampere)	(Ampere)
476-AL 1/78-ST1A	554.10	26	7	4.83	3.76	30.60	1924	161.7	0.0606	594	758
477-AL 1/109-ST1A	585.90	30	19	4.50	2.70	31.50	2174	200.4	0.0606	596	762
476-AL 1/62-ST1A	537.70	54	7	3.35	3.35	30.20	1799	146.4	0.0608	584	744
525-AL 1/68-ST1A	593.60	54	7	3.52	3.52	31.70	1986	159.0	0.0550	617	789
606-AL 1/77-ST1A	682.90	54	19	3.78	2.27	34.00	2278	184.6	0.0477	666	858
645-AL 1/82-ST1A	726.80	54	19	3.90	2.34	35.10	2424	196.4	0.0448	689	890
766-AL 1/97 -ST1 A	863.10	54	19	4.25	2.55	38.30	2878	233.2	0.0377	755	983
806-AL 1/102-ST1A	908.70	54	19	4.36	2.62	39.30	3032	245.8	0.0358	776	1013
1223-AL1/307-ST1A	1529.70	72	37	4.65	3.25	50.70	5796	533.3	0.0237	964	1296
27-AL 1/4-ST1A	31.10	6	1	2.38	2.38	7.14	108	9.7	1.0736	104	124
47-AL 1/8-ST1 A	54.60	6	1	3.15	3.15	9.45	189	16.3	0.6129	145	174
67-AL1/11-ST1A	78.60	6	1	3.78	3.78	11.30	272	23.1	0.4256	180	218
242-AL 1/39-ST1A	281.10	26	7	3.44	2.68	21.80	976	84.9	0.1195	405	505
337-AL 1/44-ST1A	381.00	54	7	2.82	2.82	25.40	1275	107.2	0.0857	482	607
485-AL 1 /63-ST1 A	547.30	54	7	3.38	3.38	30.40	1831	149.0	0.0597	589	752
22-AL 1/4-ST1A	25.20	6	1	2.14	2.14	6.42	87	8.1	1.3279	92	109
30-AL 1/5-ST1A	34.90	6	1	2.52	2.52	7.56	121	10.8	0.9576	111	133
43-AL 1/7-ST1A	50.10	6	1	3.02	3.02	9.06	174	15.0	0.6668	138	166





ALL ALUMINUM CONDUCTOR STEEL REINFORCED (ACSR) - EN 50182 : 2001- TYPE A1/ST1A

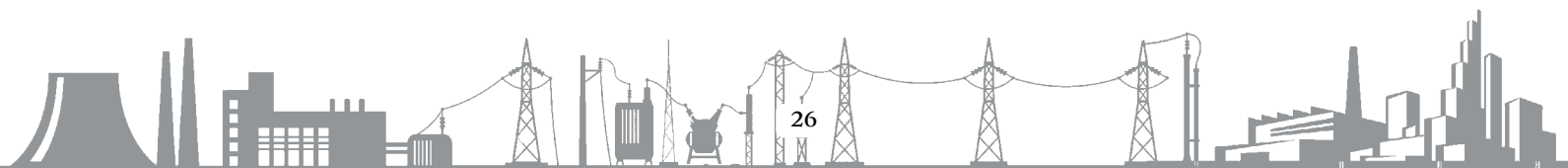
Code Name	Sectional Area (mm ²)	Stranding		Wire diameter		Diameter of Complete Conductor (mm)	Conductor Weight (Kg/km)	Rated Strength KN	DC Resistance @ 20°C (Ω/Km)	Current Capacity	
		No. of Wires		AL (mm)	Steel (mm)					@ 75°C (Ampere)	@ 85°C (Ampere)
		AL (No.)	Steel (No.)								
		(mm ²)	(No.)	(No.)	(mm)					(mm)	(mm)
60-AL 1/10-ST1 A	69.70	6	1	3.56	3.56	10.70	241	20.5	0.4798	168	202
79-AL 1/18-ST1 A	97.30	30	7	1.83	1.83	12.80	362	36.1	0.3663	212	258
97-AL 1/23-ST1A	119.80	30	7	2.03	2.03	14.20	446	44.0	0.2977	240	293
121-AL 1/28-ST1A	149.70	30	7	2.27	2.27	15.90	557	53.5	0.2381	273	335
150-AL 1/35-ST1 A	184.50	30	7	2.52	2.52	17.60	687	65.2	0.1932	309	380
194-AL 1/45-ST1A	239.40	30	7	2.87	2.87	20.10	891	84.6	0.1489	359	445
244-AL 1/57-ST1 A	301.30	30	7	3.22	3.22	22.50	1121	103.0	0.1183	409	511
282-AL 1/66-ST1 A	347.90	30	7	3.46	3.46	24.20	1294	118.9	0.1025	444	557
357-AL 1/46-ST1A	402.90	54	7	2.90	2.90	26.10	1348	113.4	0.0811	497	627
440-AL 1/57-ST1 A	496.70	54	7	3.22	3.22	29.00	1662	135.3	0.0658	559	710
487-AL 1/63-ST1A	550.60	54	7	3.39	3.39	30.50	1842	149.9	0.0593	592	755
531-AL 1/69-ST1A	600.40	54	7	3.54	3.54	31.90	2009	160.8	0.0544	620	794
748-AL 1/97-ST1A	845.20	96	19	3.15	2.55	38.00	2833	234.1	0.0387	755	982
135-AL 1/22-ST1A	156.90	26	7	2.57	2.00	16.30	545	48.7	0.2141	290	355
201-AL 1/33-ST1 A	234.10	26	7	3.14	2.44	19.90	812	70.5	0.1434	365	453
283-AL 1/46-ST1A	328.50	26	7	3.72	2.89	23.60	1140	97.6	0.1022	443	555
685-AL 1/89-ST1A	774.20	54	7	4.02	4.02	36.20	2590	207.4	0.0422	711	921





ALL ALUMINUM CONDUCTOR STEEL REINFORCED (ACSR) - EN 50182 : 2001- TYPE A1/ST1A

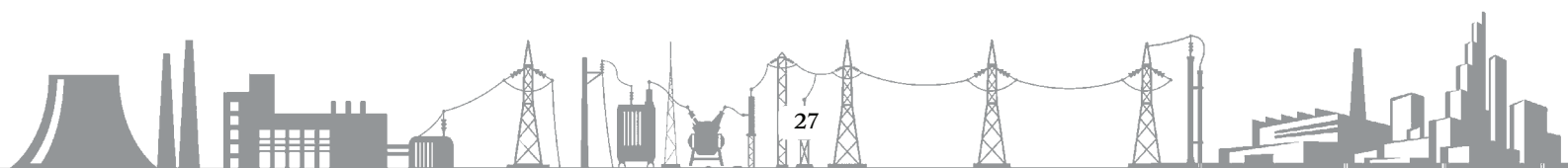
Code Name	Sectional Area (mm ²)	Stranding		Wire diameter		Diameter of Complete Conductor (mm)	Conductor Weight (Kg/km)	Rated Strength KN	DC Resistance @ 20°C (Ω/Km)	Current Capacity	
		No. of Wires		AL (mm)	Steel (mm)					@ 75°C (Ampere)	@ 85°C (Ampere)
		AL	Steel								
		(No.)	(No.)								
563-AL 1/29-ST1A	592.00	42	7	4.13	2.31	31.70	1784	123.5	0.0513	637	816
735-AL 1/38-ST1 A	772.90	42	7	4.72	2.63	36.20	2328	160.9	0.0393	734	952
865-AL 1/44-ST1A	908.80	42	7	5.12	2.83	39.20	2733	188.6	0.0334	799	1043
117-AI/68-ST1 A	184.90	12	7	3.52	3.52	17.60	855	93.6	0.2473	255	314
152-AL 1/89-ST1A	241.20	12	7	4.02	4.02	20.10	1115	122.1	0.1896	297	369
251-AL 1/65-ST1A	315.60	32	7	3.16	3.43	22.90	1200	112.6	0.1152	416	520
11-AL 1/2-ST1A	12.40	6	1	1.50	1.50	4.50	43	4.1	2.7027	60	70
21-AL 1/3-ST1A	24.50	6	1	2.11	2.11	6.33	85	7.9	1.3659	90	107
26-AL 1/4-ST1A	30.60	6	1	2.36	2.36	7.08	106	9.6	1.0919	103	123
32-AL 1/5-ST1A	36.90	6	1	2.59	2.59	7.77	128	11.4	0.9065	115	137
37-AL 1/6-ST1A	42.80	6	1	2.79	2.79	8.37	148.1	13.2	0.7812	126	150
42-AL 1/7-ST1A	49.50	6	1	3.00	3.00	9.00	171	15.3	0.6757	137	164
53-AL 1/9-ST1A	61.70	6	1	3.35	3.35	10.10	214	18.4	0.5419	156	188
63-AL 1/11-ST1A	73.60	6	1	3.66	3.66	11.00	255	21.7	0.4540	173	209
63-AL 1/37-ST1A	100.10	12	7	2.59	2.59	13.00	463	52.79	0.4568	178	216
7 5-AL 1/13-ST1 A	87.50	6	1	3.99	3.99	12.00	303	25.8	0.3820	192	233
73-AL 1/43-ST1A	116.20	12	7	2.79	2.79	14.00	537	61.3	0.3936	194	237
79-AL 1/13-ST1A	92.00	6	1	4.09	4.09	12.30	318	27.1	0.3635	198	240

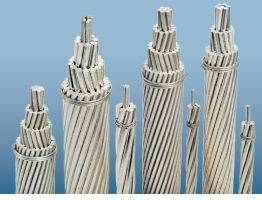




ALL ALUMINUM CONDUCTOR STEEL REINFORCED (ACSR) - EN 50182 : 2001- TYPE A1/ST1A

Code Name	Sectional Area (mm ²)	Stranding		Wire diameter		Diameter of Complete Conductor (mm)	Conductor Weight (Kg/km)	Rated Strength KN	DC Resistance @ 20°C (Ω/Km)	Current Capacity	
		No. of Wires		AL (mm)	Steel (mm)					@ 75°C (Ampere)	@ 85°C (Ampere)
		AL	Steel								
		(No.)	(No.)								
84-AL 1/14-ST1 A	97.90	6	1	4.22	4.22	12.70	339	28.8	0.3415	205	249
95-AL1/16-ST1A	111.30	6	1	4.50	4.50	13.50	385	32.8	0.3003	221	269
105-AL 1/17-ST1A	122.50	6	1	4.72	4.72	14.20	424	36.0	0.2730	234	285
105-AL 1/14-ST1A	118.50	6	7	4.72	1.57	14.20	394	32.7	0.2733	234	285
132-AL 1/20-ST1 A	151.80	26	7	2.54	1.91	15.90	521	45.9	0.2192	285	349
132-AL 1/7-ST1A	138.80	18	1	3.05	3.05	15.30	419	29.7	0.2188	283	347
131-AL 1/31-ST1A	161.90	30	7	2.36	2.36	16.50	602	57.9	0.2202	286	351
158-AL 1/37-ST1 A	194.90	30	7	2.59	2.59	18.10	725	68.9	0.1829	319	393
159-AL 1/9-ST1A	167.50	18	1	3.35	3.35	16.80	505	35.9	0.1814	316	388
183-AL 1/43-ST1A	226.20	30	7	2.79	2.79	19.50	842	79.97	0.1576	347	430
184-AL1/10-ST1A	194.50	18	1	3.61	3.61	18.10	587	40.7	0.1562	345	425
211-AL1/12-ST1A	222.30	18	1	3.86	3.86	19.30	671	46.6	0.1366	372	461
264-AL 1/62-ST1 A	326.10	30	7	3.35	3.35	23.50	1213.4	111.50	0.1093	428	536
324-AL 1/76-ST1A	400.00	30	7	3.71	3.71	26.00	1488.2	135.1	0.0891	481	606
375-AL 1/88-ST1A	462.60	30	7	3.99	3.99	27.90	1721.3	156.3	0.0771	521	661
374-AL 1/48-ST1A	422.60	54	7	2.97	2.97	26.70	1413.8	118.9	0.0773	511	645
430-AL 1/100-ST1A	529.80	30	7	4.27	4.27	29.90	1971.4	179.0	0.0673	562	716
429-AL 1/56-ST1 A	484.50	54	7	3.18	3.18	28.60	1620.8	131.9	0.0674	551	700





ALL ALUMINUM CONDUCTOR STEEL REINFORCED (ACSR) - EN 50182 : 2001- TYPE A1/ST1A

Code Name	Sectional Area (mm ²)	Stranding		Wire diameter		Diameter of Complete Conductor (mm)	Conductor Weight (Kg/km)	Rated Strength KN	DC Resistance @ 20°C (Ω/Km)	Current Capacity	
		No. of Wires		AL (mm)	Steel (mm)					@ 75°C (Ampere)	@ 85°C (Ampere)
		AL (No.)	Steel (No.)								
		(mm ²)	(No.)	(No.)	(mm)					(mm)	(mm)
477-AL1/111-ST1A	588.50	30	7	4.50	4.50	31.50	2 189.5	198.8	0.0606	596	762
528-AL 1/69-ST1A	597.00	54	7	3.53	3.53	31.80	1 997.3	159.9	0.0547	618	792
68-AL 1/39-ST1A	107.20	12	7	2.68	2.68	13.40	496	56.5	0.4266	185	225
128-AL 1/21-ST1A	148.50	26	7	2.50	1.95	15.90	516	46.8	0.2263	280	344
265-AL 1/43-ST1A	307.80	26	7	3.60	2.80	22.80	1 068.0	91.5	0.1091	427	533
349-AL 1/79-ST1A	428.20	30	19	3.85	2.30	26.90	1 585.7	145.9	0.0828	501	633
416-AL 1193-ST 1 A	508.90	30	19	4.20	2.50	29.30	1 881.8	172.8	0.0696	552	702
520-AL 1/66-ST1 A	585.30	54	19	3.50	2.10	31.50	1 952.1	162.7	0.0556	613	784
629-AL 1/79-ST1A	707.60	54	19	3.85	2.30	34.60	2 356.6	190.6	0.0460	679	876
748-AL 1/93-ST1A	841.40	54	19	4.20	2.50	37.70	2 799.3	226.0	0.0386	746	969
859-AL 1/109-ST1A	967.60	54	19	4.50	2.70	40.50	3 226.9	261.4	0.0337	800	1048
1657-AL 1/209-ST1A	1 865.4	150	37	3.75	2.68	56.30	6 222.4	503.0	0.0175	1106	1511

